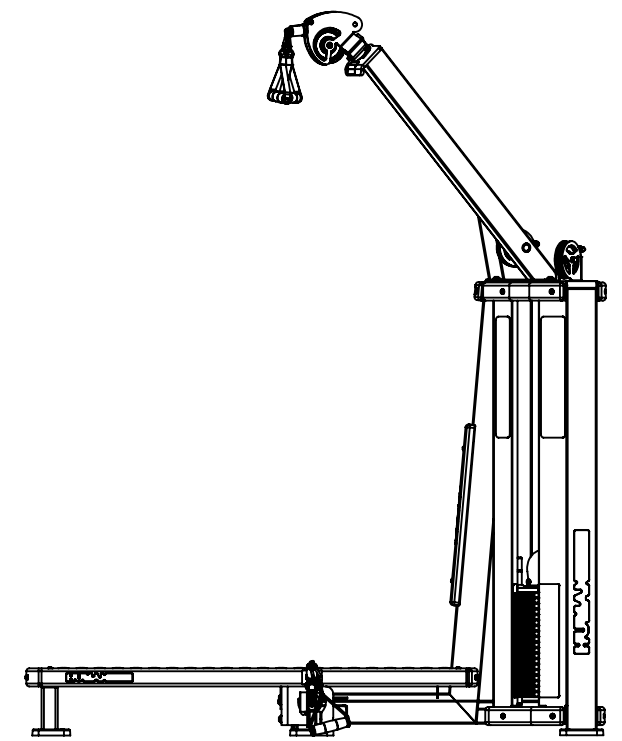
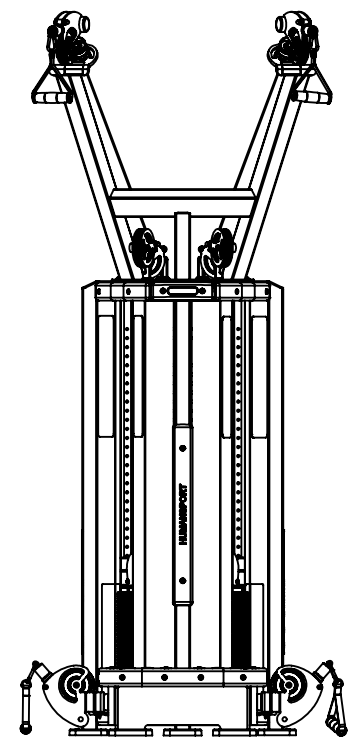
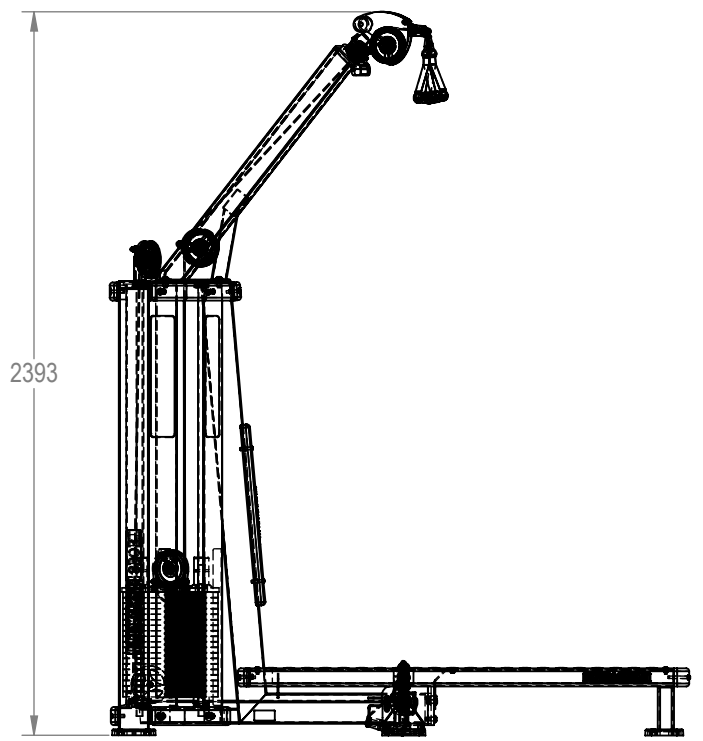
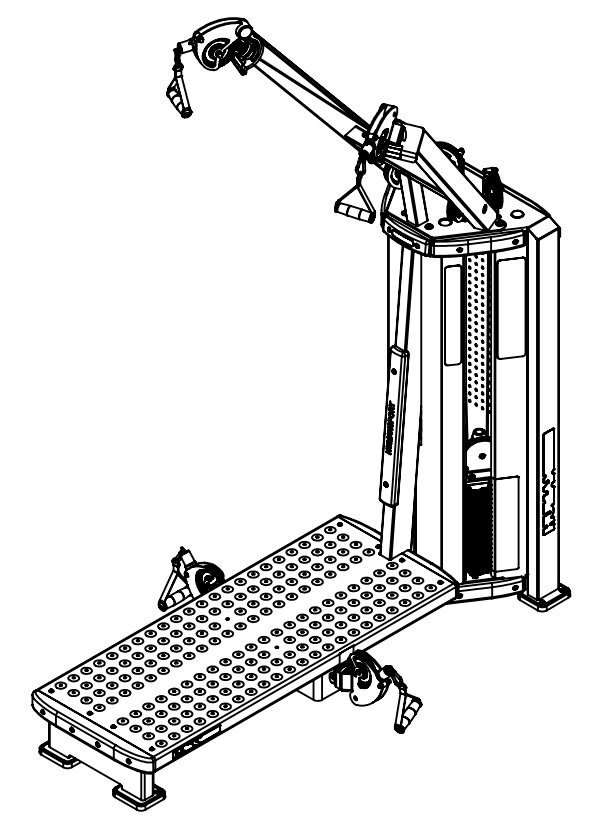
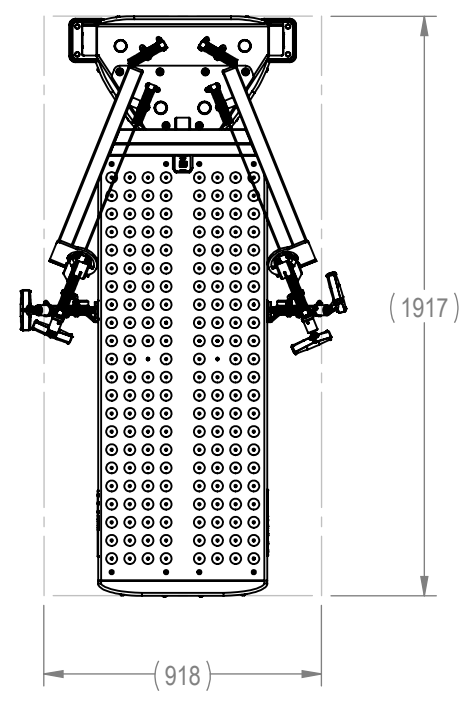


NOTES:

REVISION HISTORY				
REV	DATE	DESCRIPTION	ECO	BY
A	---	DOCUMENT RELEASE	---	---
B	8/27/2013	REDRAW BOM. CHANGE TO LOCK N LOAD, CHANGE SHROUDS, CHANGE STICKERS.	14334	CRB



**DOCUMENT STATUS:  
RELEASE**

NOTICE OF PROPRIETARY INFORMATION  
THIS DOCUMENT SHALL NOT BE REPRODUCED NOR SHALL THE INFORMATION CONTAINED HEREIN BE USED BY OR DISCLOSED TO OTHER EXCEPT AS EXPRESSLY AUTHORIZED BY CORE HEALTH & FITNESS, LLC.

MATERIAL SEE BOM	THIRD ANGLE PROJECTION		CORE HEALTH & FITNESS, LLC 4400 NE 77th Ave., Suite 300 Vancouver, WA 98662	
			CORE PART NO <b>9HL-M9202-XXXXX</b>	REV <b>B</b>
FINISH SEE BOM	DRAWN CRB	DATE 8/27/2013	TITLE HS, MFT, PULL LIFT, W/LNL	
VENDOR:	P/N:	U.O.M. MM	SCALE: 1:25	SHEET 1 OF 4

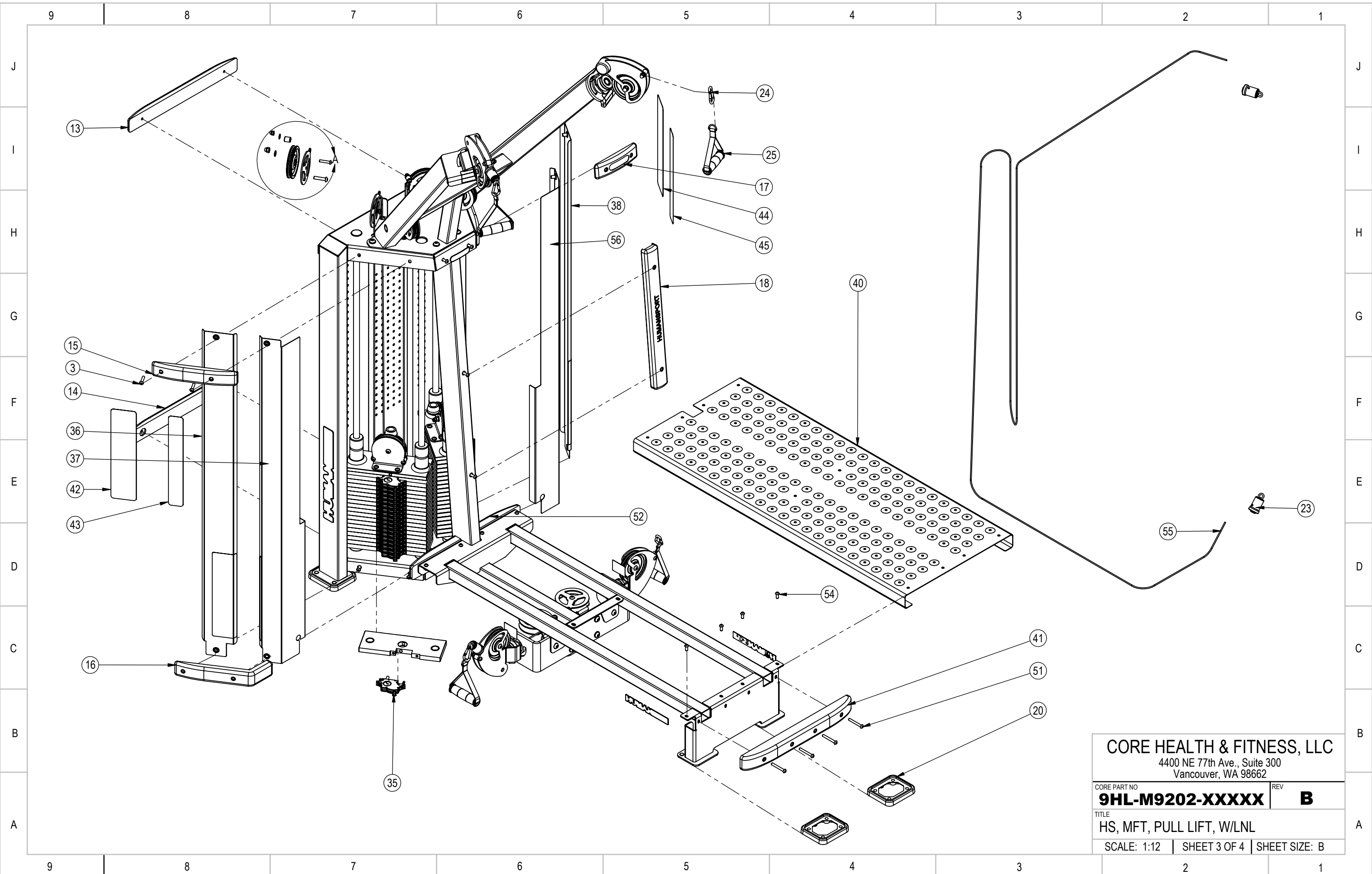
9 8 7 6 5 4 3 2 1

J I H G F E D C B A

9	8	7	6	5	4	3	2	1	
ITEM NO.	PartNo	DESCRIPTION	QTY.						
J	3	730-3030	BOLT, GENERAL, HUMAN SPORT	24					
	4	730-3043	WASHER, PULLEY BRACKET, HUMAN SPORT	23					
	5	730-3034	ACORN NUT, GENERAL, HUMAN SPORT	8					
	7	730-3020	PULLEY BOLT, HUMAN SPORT	8					
I	13	020-6986-X	TRIM, WOOD, TOP, BACK, HS	1					
	14	020-6987-X	TRIM, WOOD, BOTTOM, BACK, HS	1					
	15	020-6983-X	TRIM, WOOD, UPPER, HS	2					
	16	020-6982-X	TRIM, WOOD, BOTTOM, HS	2					
	17	020-6985-X	TRIM, WOOD, TOP, CENTER, HS	1					
H	18	020-6984-X	TRIM, WOOD, CENTER, HS	1					
	20	020-6988	PAD, RUBBER, FEET, HS	5					
	23	730-0129	BEARING, ROTATING, CLAMP	4					
	24	730-0143	CLIP, METAL, HS	4					
G	25	730-0126	GRIP, HANDLE, HS	4					
	26	050-2007	LABEL, HUMAN SPORT,41.1 X 5.0	2					
	27	050-2010	LABEL, HUMAN SPORT, 22CM X 2.67CM	2					
	30	050-2008	LABEL, CAUTION, MOVING PARTS, HS	2					
F	34	731-0101	PLATE,WEIGHT,5Kg,18mm	38					
	35	731-1423-KT	KIT,ASSY,SWITCH,LNL,STRAIGHT	38					
	36	730-3025	SHROUD, RIGHT, OUTSIDE	1					
	37	730-3036	SHROUD, INSIDE, LEFT, HS	1					
E	38	730-3022	SHROUD, OUTSIDE, LEFT, HUMAN SPORT	1					
	39	730-0142	PULLEY, ASSY, HS	8					
	40	020-6993	PLATFORM, SHEET METAL, LARGE,HS	1					
	41	020-6989-X	TRIM, WOOD, BOTTOM PLATFORM, HS	1					
D	42	730-3050	STICKER, SHROUD, OUTSIDE LEFT, PULL LIFT, HS	1					
	43	730-3049	STICKER, SHROUD, INSIDE LEFT, PULL LIFT, HS	1					
	44	730-3047	STICKER, SHROUD, OUTSIDE RIGHT, PULL LIFT, HS	1					
	45	730-3048	STICKER, SHROUD, INSIDE RIGHT, PULL LIFT, HS	1					
C	47	730-3031	OUTER BRACKET, PULLEY HUMAN SPORT	6					
	48	730-3032	SPACER, PULLEY BRACKET, HUMAN SPORT	6					
	49	120-3301	WASHER, M10	6					
	50	730-3033	ACORN NUT, PULLEY BOLT, HUMAN SPORT	6					
B	51	730-3044	BOLT. TRIM, PLATFORM, LEGS, HS	4					
	52	020-7002-X	TRIM, PLATFORM,BACK, PULL, HS	2					
	55	130-1751	CABLE, 6.5 METERS, HS	1					
	56	730-3037	SHROUD, INSIDE, RIGHT, HS	1					

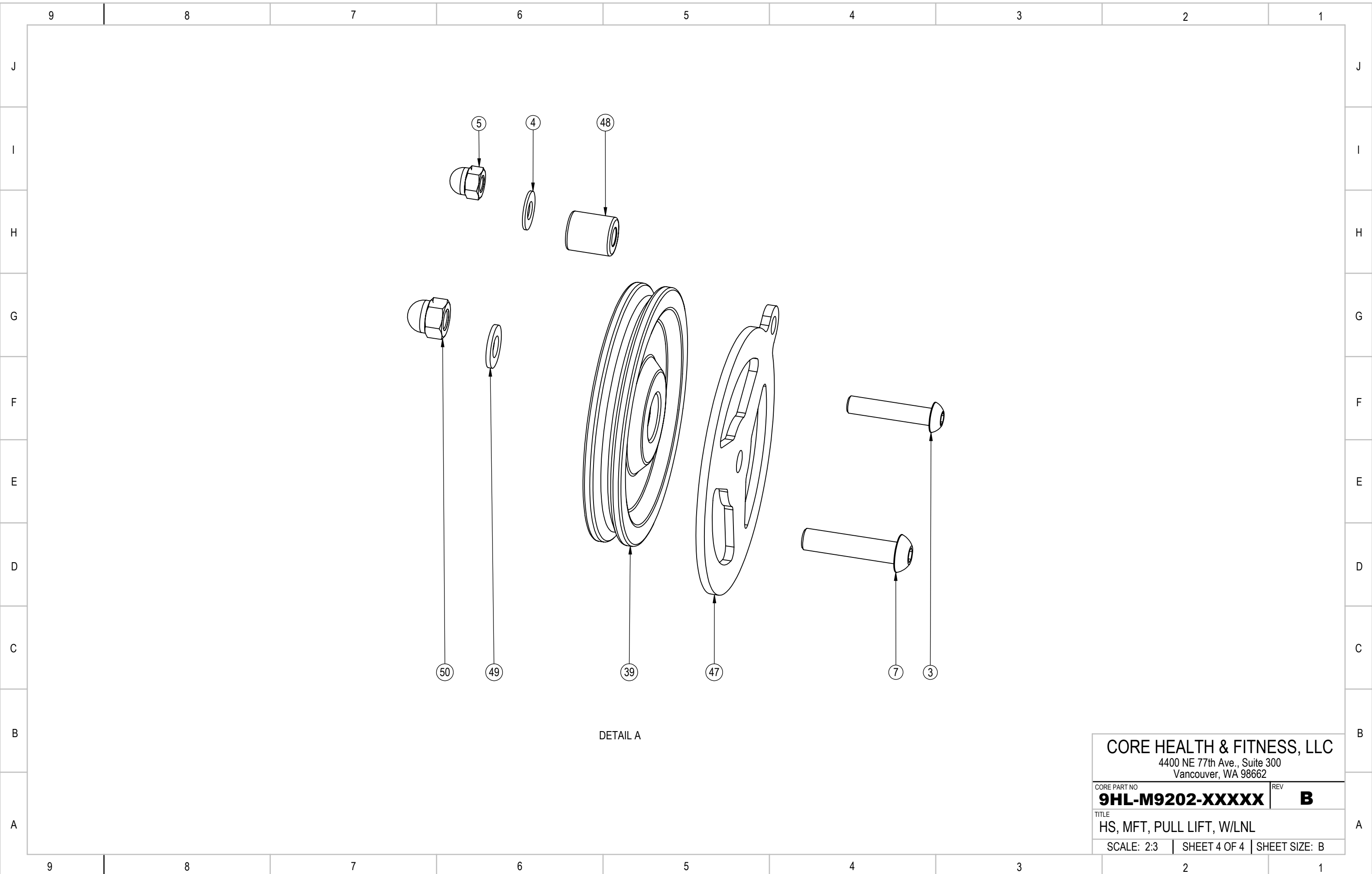
**CORE HEALTH & FITNESS, LLC**  
4400 NE 77th Ave., Suite 300  
Vancouver, WA 98662

CORE PART NO	<b>9HL-M9202-XXXXX</b>	REV	<b>B</b>
TITLE	HS, MFT, PULL LIFT, W/LNL		
SCALE: 1:25	SHEET 2 OF 4	SHEET SIZE: B	



CORE HEALTH & FITNESS, LLC  
 4400 NE 77th Ave., Suite 300  
 Vancouver, WA 98662

CORE PART NO	REV
<b>9HL-M9202-XXXXX</b>	<b>B</b>
TITLE	
HS, MFT, PULL LIFT, W/LNL	
SCALE: 1:12	SHEET 3 OF 4   SHEET SIZE: B



DETAIL A

CORE HEALTH & FITNESS, LLC  
 4400 NE 77th Ave., Suite 300  
 Vancouver, WA 98662

CORE PART NO	REV
<b>9HL-M9202-XXXXX</b>	<b>B</b>
TITLE	
HS, MFT, PULL LIFT, W/LNL	
SCALE: 2:3	SHEET 4 OF 4   SHEET SIZE: B